

CUSTOMER STORY

MIKKA MONITORS IN FULLY AUTOMATED CAFÉS

Customer
KNEXT GmbH

KNEXT hospitality
robotic
solutions

Industry
Robotic Solutions

Initial Situation and Requirements

KNEXT GmbH, specialising in automation solutions for the hospitality and hotel industry, has developed an innovative and fully automated premium coffee shop. On an area of just nine square meters, this robot-controlled FutureCafé offers a wide selection of drinks and snacks.

For the FutureCafé, KNEXT needed reliable monitors for two specific application areas:

1. **Order and Payment Terminal:** Three monitors are used as user interfaces, requiring precise touch functionality and excellent readability. Easy installation is also essential to seamlessly integrate the device into the existing terminal housing
2. **Digital Signage Solution:** Another three monitors are used to display the product range. Flush integration and continuous operation capability are crucial to reliably showcase KNEXT's content and present it in an appealing way.

Our Solutions and Results

In accordance with KNEXT's requirements, we provided the following monitor solutions:

For the order and payment terminal, we selected the MK133XMS monitor model from our standard product range. This device, part of the "S-Line" Design Line enables flush integration, delivering both functional and aesthetic appeal.

The 13.3 inch monitor impresses with the following features:

- A 178° horizontal and vertical viewing angle provides clear visibility from almost any angle, making operation easier and enhancing user-friendliness.
- The multitouch display enables quick, smooth interactions and ensures precise, reliable touch inputs.
- The high-quality monitor components guarantee a long lifespan and reduce maintenance and replacement costs.



MIKKA Monitor Solution



MK133XMS:

- 13.3 Inch
- Extended Viewing Angle
- Multitouch
- Design Line „S-Line“



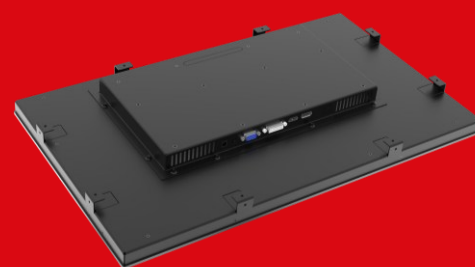
Our Solutions and Results

For the product presentation in the FutureCafé, we used the public display model MK238XPGS from our standard range, featuring a screen size of 23.8 inches.

The monitor impresses with the following features:

- Plug and Play: Easy connection of a USB stick to reliably play content in 24/7 continuous operation.
- 500 Nits Brightness Upgrade: Ensures optimal readability of the displays.
- A 178° horizontal and vertical viewing angle provides clear visibility from almost any angle, making operation easier and enhancing user-friendliness.
- The high-quality monitor components guarantee a long lifespan and reduce maintenance and replacement costs.

MIKKA Monitor Solution



MK238XPGS:

- 23.8 Inch
- Extended Viewing Angle
- Public Display
- Design Line „S-Line“



Customer Benefits

- Long-term planning: MIKKA guarantees the availability of the selected monitor model for 5 years. After this period, MIKKA provides an identical replacement model.
- Short delivery times
- 3-year manufacturer warranty
- Sustainable monitor design ensures easy repairs when needed
- Individual, personal and expert customer support through our sales team in pre- and aftersales.
- Customised solutions, tailored to customer requirements, are feasible.

This is what Knext says about our collaboration

"With MIKKA, we have found a flexible and reliable partner who always responds quickly to our rapidly evolving requirements. Thanks to MIKKA's wide range of products and the modular design of the screens, we were able to cover all our needs with just one supplier. We use two types of MIKKA displays: a 24 inch model as a digital signage solution and a smaller touch version for our ordering terminals."

- Harald Rohrmoser, CEO of KNEXT

